

Lourdes Medical Pavilion

QuickView

Organization:

Lourdes Medical Pavilion

Industry:

Healthcare

Application:

Medical Imaging

Integrator:

GE Healthcare

Solution:

Centricity PACS system
Plasmon UDO Archive Appliance™

ROI:

- > 20-year gain in shelf life of storage media
- > 6 to 8 times the available on-line records
- > Cost-effective disaster recovery plan

The Lourdes Medical Pavilion (LMP) in Paducah, Kentucky, is a freestanding outpatient diagnostic medical facility that houses the Women's Health and Wellness Center and the Paducah Diagnostic Center. LMP services more than a dozen counties in western Kentucky, southern Illinois, southeastern Missouri and northwestern Tennessee. Its digital diagnostic imaging capabilities include 64-slice CT scans, MRI, X-ray, ultrasound, digital mammography and stereotactic breast biopsies. These services, and the 115 skilled employees who deliver them, make LMP the only outpatient facility of its type in Western Kentucky.

The Challenge

Lourdes Medical Pavilion needed to keep pace with an increasing amount of imaging data and still continue to offer the most advanced image-intensive services available. In order to do so, LMP needed to upgrade the PACS (Picture Archiving and Communications System) it had purchased in 1999. The original PACS, a GE Healthcare PathSpeed system, archived images using a Plasmon™ M258 Magneto Optical Library. Lourdes Medical Pavilion had exhausted 75 percent of the older system's 1.3TB (terabyte) capacity and LMP wanted to be able to handle its increasing volumes of real-time data in addition to establishing a long-term disaster recovery strategy.



Lourdes Medical Pavilion institutes a two-tier PACS for data-intensive images and disaster recovery.

“

The Plasmon UDO Archive Appliance is the perfect complement to our GE Centricity PACS. Not only does it provide a scalable, cost-effective way to archive our images, it also doubles as our disaster recovery solution.”

Ron Hagan

Radiology Supervisor / PACS Administrator
Lourdes Medical Pavilion

The multi-slice CT scans can range from 60 to 800 images per scan with each image requiring 1MB (megabyte) of storage capacity. In addition, doctors ordering aortic runoff studies, full-blown vascular studies and cardiac CT angiography can produce images as large as 5MB each and larger. These file sizes were defining LMP as a data-intensive organization with significant storage challenges.

The fact that HIPAA requires some patient records to be accessible for time periods ranging from three to 21 years compounded this challenge.

Ron Hagan, LMP's Radiology Supervisor/PACS Administrator, was pleased with the original GE Healthcare and Plasmon system. According to Hagan, "There were no problems from day one, it was hands-free, and we were happy with it." When upgrading, however, Hagan learned that the Plasmon M258 Library would not work seamlessly with the new Centricity PACS system that he planned to install.

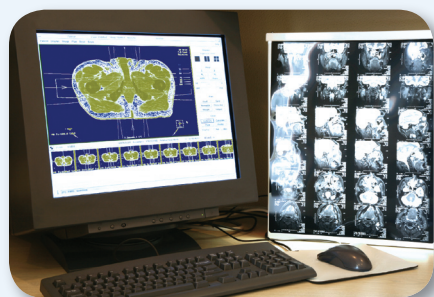
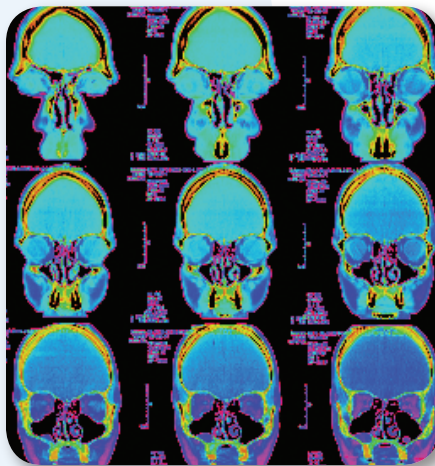
Lourdes Medical Pavilion
Kentucky
USA

In order for LMP to upgrade without compatibility issues and also to achieve long-term storage goals, its personnel needed to upgrade their data archive as well. Based on the advice of GE Healthcare, LMP considered the Plasmon UDO Archive Appliance.™ **UDO ARCHIVE APPLIANCE**™ The UDO Archive Appliance is an integrated, tiered-archive solution based on UDO™ (Ultra Density Optical) technology, which has a longer shelf life — 50 years versus 30 years — than the technology used in the prior solution, the Plasmon MO (Magneto Optical) Library.

The Solution

To handle the increasing amount of data coming from its imaging applications and to efficiently plan for disaster recovery, LMP purchased the UDO Archive Appliance AA174, which has a 5.2-TB capacity, as the replacement for the MO Library. Hagan was pleased with GE's suggested replacement, saying, "When they mentioned the Plasmon name as the main option, I was more than happy since it's operated so seamlessly in the past. It was a real step up in terabytes."

LMP now has a two-tier storage strategy: an online PACS system and the UDO Archive Appliance as both an archive and a backup. GE handled a smooth installation over one weekend in August 2005, and the data migration process began immediately.



Now, the system archives redundant copies, which can eventually be moved off-site for disaster-recovery needs. As it is acquired, the image is moved into the archive and backed up. GE's Centricity Enterprise Archive Application handles all archiving onto the Plasmon solution, and is set up with a feature that automatically duplicates disks that can be taken out and stored off-site for a cost-

effective disaster recovery plan. Additionally, LMP has Plasmon UDO software to monitor what is going on inside the library and compare notes with the GE application that is sending the data into the archive.

The new GE Centricity PACS, paired with the UDO Archive Appliance, enables doctors at Lourdes Medical Pavilion to quickly retrieve patient files from LMP's six-to-eight months' worth of on-line patient records or, with a one- to two-minute delay, to pull images from several years of archives. This is an enormous improvement over the medical facility's prior one-month limit for access to stored records. In fact, the current GE Centricity System automatically pulls all available records whenever a patient arrives for an appointment.



Hagan explains, "What's really nice is that before with the Pathspeed server, we had less than a month of on-line short-term storage, and when doctors accessed the in-house web browser to do a follow-up with a patient they couldn't quickly access the off-line images. Now, they have several months available and won't have to pre-fetch the files prior to the patient's arrival." As a result, doctors now have efficient and secure access to all patient files, images and reports.

Plasmon offers the only enterprise-class active archive solution that ensures data permanence, authenticity, access, longevity and removability, at the low total cost of ownership that businesses demand.

Archive without compromise.

Plasmon is ISO 9001 certified.

© 2007 Plasmon LMS, Inc. All rights reserved. Plasmon, the Plasmon logo, UDO, UDO Archive Appliance and the UDO logo are registered trademarks of Plasmon LMS, Inc. All other trademarks are the property of their respective owners.

CS-LMP 03.07



Plasmon

Plasmon
U.S. & APAC Sales & Marketing
 370 Interlocken Boulevard, Suite 600
 Broomfield, CO 80021
 800.451.6845
 Sales@plasmon.com
 Plasmon.com

Plasmon Data Ltd.
EMEA Sales & Marketing
 Whiting Way, Melbourn
 Hertfordshire, SG8 6EN
 +44 (0) 1763 262963
 Sales@plasmon.co.uk