



# Archive One for Plasmon

## UDO Archive Appliance Integration

### Optimized and Reliable Solutions for Email Compliance & Email Storage Constraints

Compliance requirements are becoming more demanding, holding organizations accountable for storing and retrieving data sent and received from their email and instant message systems.

Email continues to increase in quantity and size, the escalating growth also has a major impact on the cost and performance of Exchange servers.

As businesses become more sophisticated, the volume and complexity of data exchanged using email forces IT managers to evaluate more comprehensive message management systems to optimize use of storage technology.

#### **C2C's Archive One reduces risk, optimizes performance and minimizes compliance issues**

In response to the growing need among enterprises for a solution to increasingly complex message management issues, Archive One offers a comprehensive solution to manage email archiving, search and discovery and mailbox capacity.

Archive One optimizes email system resources through email retention policies that reduce costs, lower business risk, improve access, and enhance email user productivity.

Archive One technology includes an advanced analytical search and policy enforcement engine, made up of nearly 50 analysis criteria used throughout the product line to centralize, automate and accelerate tasks which reduce risk associated with email and improve system usage.

Archive One can be configured to either capture all messages 'sent to', 'sent from' or sent internally or only archive selected sets of data from the mail server.

Archive One is built on a multi-repository based architecture providing flexible and scalable options for any organization.

#### **Email archiving solutions with Plasmon's UDO Archive Appliance**

The UDO Archive Appliance is a hybrid archive system that combines the speed and simplicity of RAID with the longevity and authenticity of UDO. The C2C and Plasmon technologies work together to create a secure email archiving environment.

The NAS RAID interface of the UDO Archive Appliance provides transparent and fast email access through Archive One. Off loading emails to the Archive Appliance also frees up server resource. This satisfies the needs of both users and the system administrator by allowing unrestricted email accounts, while reducing backup windows and expense.

True WORM (Write Once Read Many) UDO technology has a 50 year media life that meets the strictest regulations on record authenticity and enables cost-effective long-term retention policies. Repositories can be stored on separate UDO media sets with optimized policies to match the organization's architecture.

With system capacities ranging from 1TB to 76TB, the UDO Archive Appliance scales to accommodate virtually any email capacity requirement. In addition, UDO is a removable media that can be extracted from the system providing even greater storage expansion and very low cost disaster recovery.



## ARCHIVE ONE KEY FEATURES

### Content specific selection criteria

Archive One provides a wide range of options for archiving email information, providing thousands of combinations to meet any requirements.

### Multiple policy configurations

Archive One is designed to run multiple policies so that groups of users, mailboxes and PST files can each be treated according to the requirements of specific roles, departments or project teams.

### Automatic indexing

Archive One uses a sophisticated rules engine to index the email automatically. This index enables high speed search & retrieval of email.

### Enhanced compliance security

Senior administrators are able to implement tiered delegation, allowing lower level operators to perform their duties without jeopardizing the security of the whole archive.

### Message integrity

Archive One maintains the integrity of archived messages. On restoration it automatically decompresses and restores archived messages as per their original format.

Restored messages are presented to the administrator in their original form and also exported for further processing or analysis.

### Fully integrated audit trails

In order to ensure the integrity of the archive all activity both into and out of the archive repositories is monitored continuously.

Archive One automatically maintains audit trails of all critical activities.

### Archiving repositories

The Archive One repositories are individual logical storage databases, specified by the administrator. The repository architecture provides a highly flexible and portable set of storage containers, easily configured to meet dynamic archiving needs.

### Multi-criteria search & retrieval

Pre-indexing technology enables rapid search of the archive stores. Searching and retrieving messages is easy through selectable, user or administrator driven, web or Outlook based interfaces.

Additional features such as proximity searching make it even easier for administrators and other users to retrieve information.

## PST archiving & migration

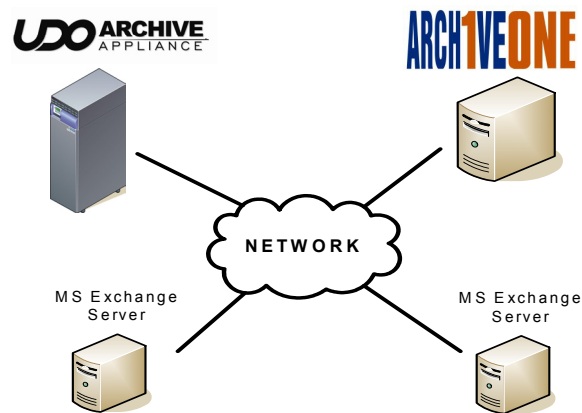
Archive One searches for PSTs on local disks and the network. Once found, the emails in the PST can be archived automatically, using central criteria, reducing the PST size. The archived emails are then included into back-up processes.

### Optimized storage with SIS PLUS

Archive One offers advanced Single Instance Storage (SIS) technology applied to attachments, saving the same attachment used in multiple emails with different content once.

### Integration with the UDO Archive Appliance

Using a simple graphical user interface, Archive One repositories can be easily configured to reside on the UDO Archive Appliance.



## Contact C2C

Americas  
1 Federal Street, Springfield, MA 01105  
Tel: 413-739-8575  
Email: [sales@c2c.com](mailto:sales@c2c.com)

UK / EMEA  
6 Richfield Place, Reading, Berks, RG1 8EQ, UK  
Tel: +44 (0)118 951 1211  
Email: [sales@c2c.com](mailto:sales@c2c.com)

Web: [www.c2c.com](http://www.c2c.com)

## Contact Plasmon

Americas / APAC  
370 Interlocken Blvd, Suite 600, Broomfield,  
CO 80021  
Tel: 800-451-6845  
Email: [sales@plasmon.com](mailto:sales@plasmon.com)

UK / EMEA  
Whiting Way, Melbourn, Herts, SG8 6EN, UK  
Tel: +44 (0)1763 262963  
Email: [sales@plasmon.co.uk](mailto:sales@plasmon.co.uk)

Web: [www.plasmon.com](http://www.plasmon.com)